

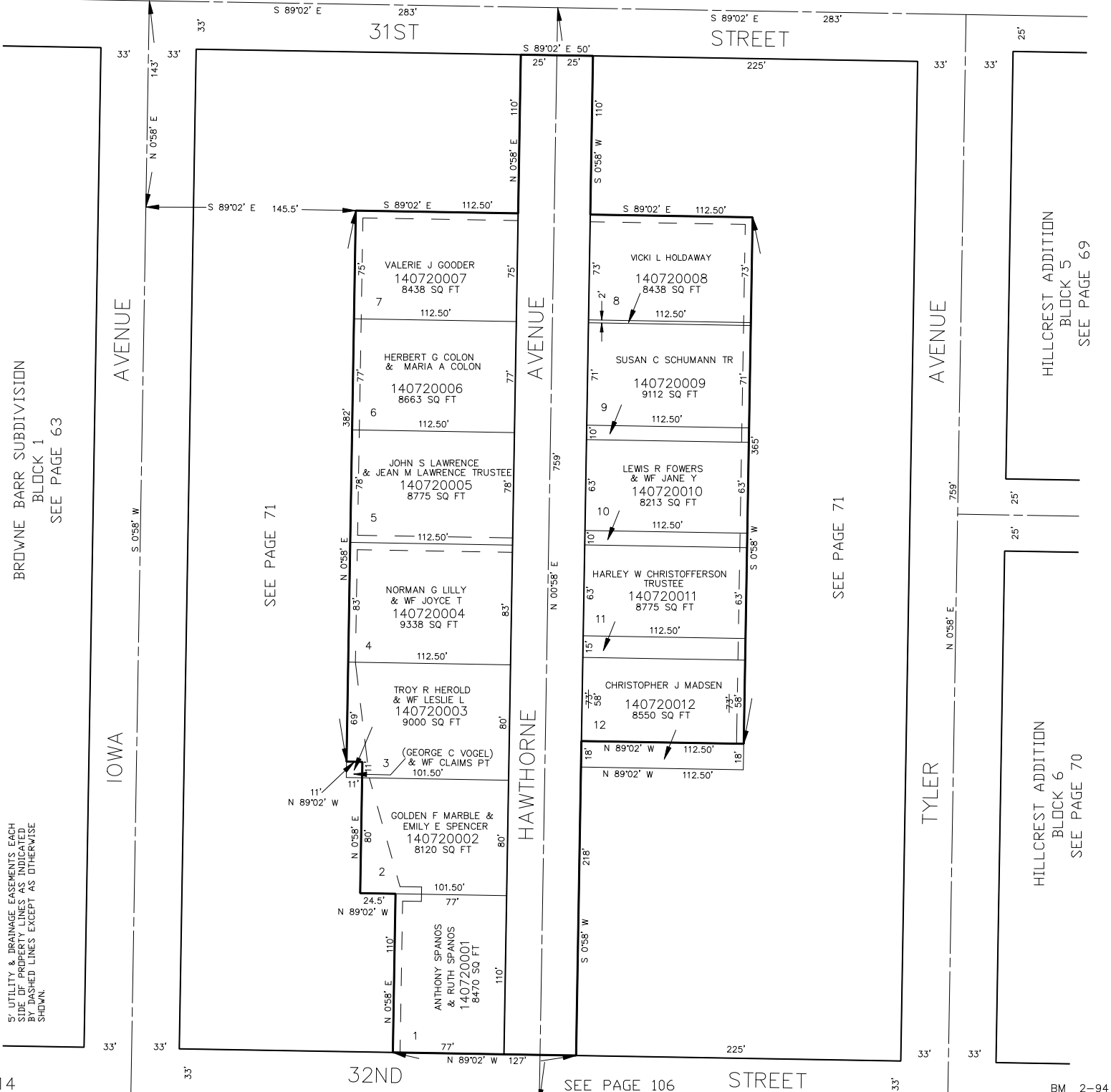
# OAK WOOD HEIGHTS

TAXING UNIT: 25

SEE PAGE 105

IN OGDEN CITY  
SCALE 1" = 50'

FOR COMPLETE ENG DATA SEE  
ORIGINAL DEDICATION PLAT IN  
BOOK 13, PAGE 28 OF RECORDS.



BROWNE BARR SUBDIVISION  
BLOCK 1  
SEE PAGE 63

5' UTILITY & DRAINAGE EASEMENTS EACH  
SIDE OF PROPERTY LINES AS INDICATED  
BY DASHED LINES EXCEPT AS OTHERWISE  
SHOWN.

HILLCREST ADDITION  
BLOCK 5  
SEE PAGE 69

HILLCREST ADDITION  
BLOCK 6  
SEE PAGE 70